

NAME (Print) _____

Borough of Manhattan Community College

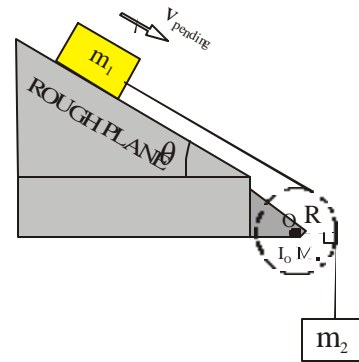
Course *Physics 215*

Instructor: *Dr. Hulan E. Jack Jr.*

Date **October 3, 2002**

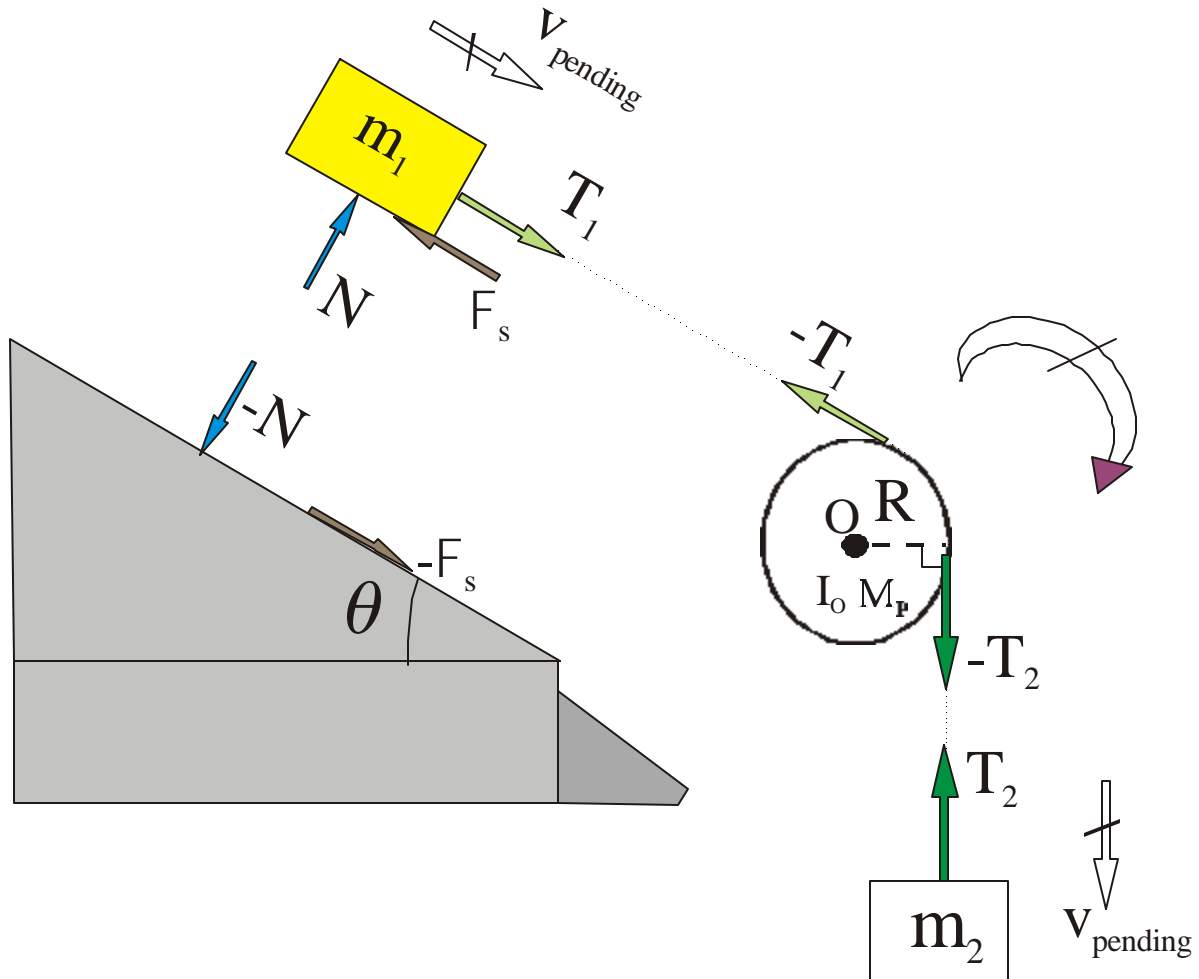
Quiz BC 04Makeup

Write in the statement of each of the parts for each action-reaction pair. For example “ T_1 the pulley pulls on me.” Note that the action-reaction between the pulley and the plane have been deliberately omitted because they are of only secondary interest.



The “-“ signs , i.e. T_1 and $-T_1$ are for analytical vector correctness. If $T_1 = 5i$ N (Newtons), that is it points in the plus x direction, then $-T_1 = -5i$ N. This would have to be used if you were using programs (programmable calculator or computer software). However, graphically both can be labeled T_1 because the directions are shown in the picture.

NOTE , ALL FORCES ARE PUT WHERE THEY ACTUALLY ACT!!!!



What's your learning style?

Are you auditory, learn by hearing? Then talk it out loud.

Are you visual, learn by seeing? Then draw pictures, doodles, sketches.

Are you kinesthetic, learn by movement? Then act it out. Pretend